

# ABOUT US...

*Working to make a different with...*

**SAFE-D-LOCK** focuses on providing the best quality and innovative LOTO product with the best service to our customers. With our rich product line and continuous effort of product upgrades and improvement, we are proud to offer a full series of LOTO products to our valued customers which are suitable for all range of manufacturing, marine, oil & gas, telecommunication, construction and buildings maintenance.

With 10 years of experience in LOTO products solution and supply, we provides professional assistance to customers during the development of Lockout Tagout procedure.

Our products compliance with safety and environmental standards with certification of CE & RoHS. Safety and quality is our top concern in product development.



# Lockout / Tagout & OSHA Compliance

## What is Lockout/Tagout ?

In 1989, OSHA introduced Standard 29 CFR 1910. 147 The Control of Hazardous Energy in order to establish lockout tagout compliance requirement for general industry. Lockout/Tagout is the process of controlling hazardous energy during the service and maintenance of machinery and equipment. These safety specific work procedures safeguard employees from accidental injuries or even death.

## Why Lockout/Tagout ?

The Control of Hazardous Energy (lockout/tagout) has been listed within OSHA's top 10 most frequently cited standards for several years. Non-compliance with this standard has resulted in thousand of worker related injuries and even deaths. Lockout/Tagout procedures are utilized to protect employees from the dangers of hazardous energy and ensure they go home safety every day.



SAFE-D-LOCK®

# OSHA Lockout / Tagout

The **OSHA Lockout / Tagout** standard outlines 5 requirements that a safety padlocks and devices must meet.

REQUIREMENT	DESCRIPTION
Durable	Manufactured with materials that withstand usage environment
Substantial	Cannot be removed unless considerable force is applied
Standardized	Clearly differentiated from other devices by color, shape or size
Identifiable	Indicates the authorized employee that applied the device
Exclusive for Safety	Not to be used for purposes other than controlling energy

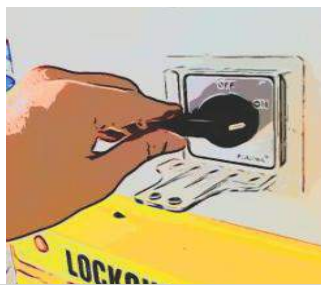
## Step to LOCKOUT



1

**NOTIFY  
EMPLOYEES**

Notify affected employees that the machine or equipment will be shut down & locked out



2

**SHUTDOWN  
EQUIPMENT**

Shut down the equipment or machine using normal procedures.



3

**ISOLATE  
ENERGY**

Isolate all energy sources



5

**VERIFY  
LOCKOUT**

Test machinery to make sure it can't start up. (Use the normal start procedure)



4

**ATTACH  
LOCK & TAG  
DEVICES**

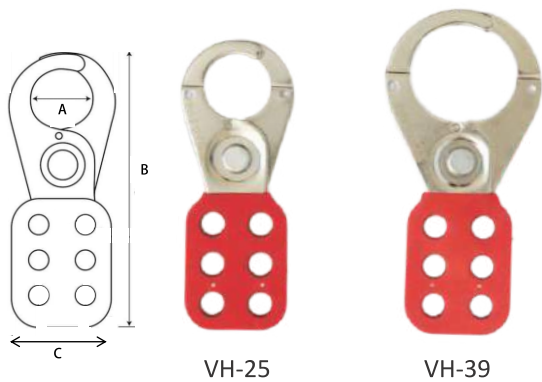
Lockout all switches and energy controls with assigned locks and tags

# LOCKOUT HASP



Lockout Hasp are allowing multiple workers to isolate an energy source at the same lockout point. The system is locked out to prevent unexpected start-up of machinery or electrical during maintenance or servicing. Control devices cannot be turned on until last worker's padlock is removed from hasp.

## STAINLESS STEEL LOCKOUT HASP

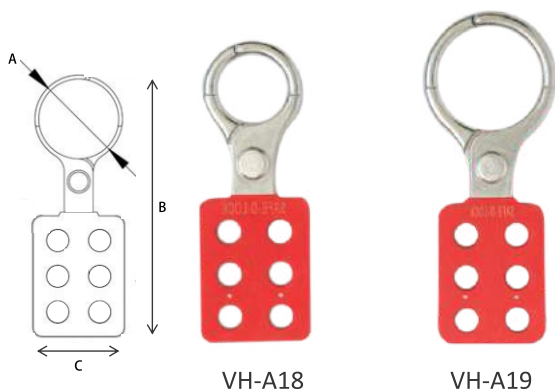


### Features

- Manufactured from 304 stainless steel
- Nylon injection at the handle
- Padlock holes : 10.5mm
- Jaws diameter : 25mm and 38mm
- Accommodate up to six padlocks
- Complied with CE and RoHS standard

Part Number	Jaw Diameter (A) mm	Length (B) mm	Body Width (C) mm
VH-25	25	115	38
VH-39	38	128	41.5

## ALUMINIUM HASP



### Features

- Aluminum with nylon injection handle
- Non-sparking
- Light weight
- Padlock holes : 10.5mm
- Jaws diameter : 25mm and 38mm
- Accommodates up to six locks

Part Number	Jaw Diameter (A) mm	Length (B) mm	Body Width (C) mm
VH-A18	25	112	40
VH-A19	38	123	40

## ELECTROPLATED HASP

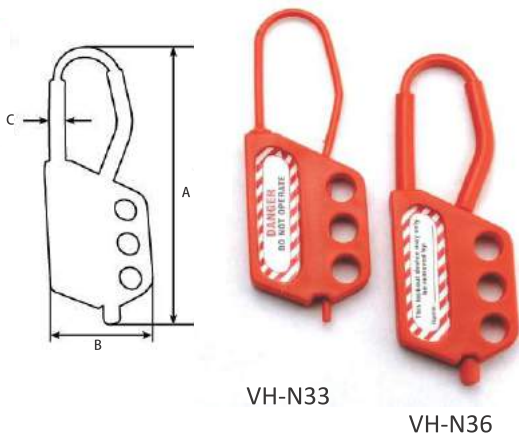


### Features

- Die cut section made from solid Heavy gauge steel plate
- Joined with Chrome plated aluminum rivet
- Electroplated body
- Inner dimension size : 25mm and 38mm
- Each Hasp accommodates up to six locks
- Padlock Holes : 11mm

Part Number	Jaw Diameter (A) mm	Length (B) mm	Body Width (C) mm
VH-E25	25	112	32
VH-E39	38	127	37

## NON-CONDUCTIVE NYLON HASP

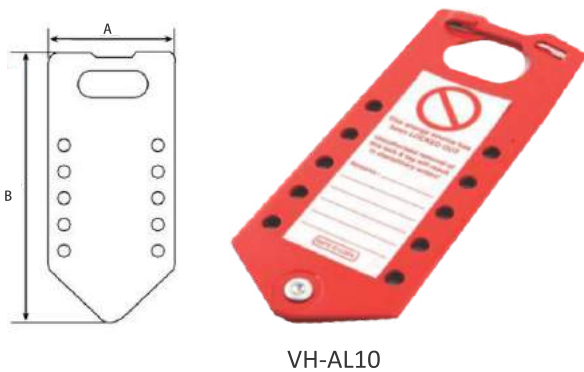


### Features

- Injection molded one piece construction
- Made from special grade polyurethane composition
- Color: Red
- Can be applied to any instrument for locking out
- Each Hasp accommodates up to three locks

Part Number	Length (A) mm	Body Width (B) mm	Shackle Diameter (C) mm
VH-N33	110	40	3
VH-N36	114	40	6

## ALUMINIUM LABELING HASP

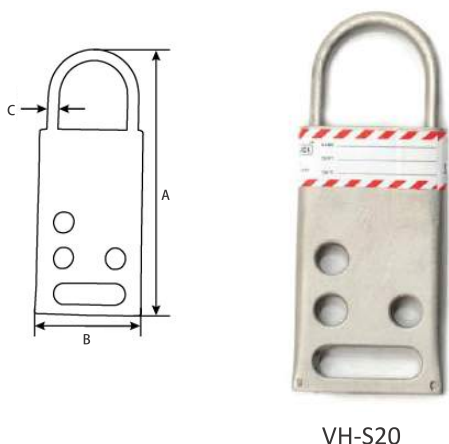


### Features

- Powder Coated Aluminum HASP
- Combines Lockout and Tagout Identification
- Write on safety label
- Accommodates up to ten Padlocks

Part Number	Length (B) mm	Body Width (A) mm
VH-AL10	77	190

## STAINLESS STEEL HASP



### Features

- Made from 304 Stainless Steel
- Ideal for corrosive environment
- Lockout up to 6 locks

Part Number	Length (A) mm	Body Width (B) mm	Shackle Diameter (C) mm
VH-S20	112	45	5

# LOCKOUT PADLOCK

## LOCKOUT SAFETY PADLOCK

Lockout Safety Padlock are standardized by size, shape and available in different range of colors easier for workers to aware when device is isolated.

### SAFETY PADLOCK COMPLIANCE

PA lock body resistance of chemical extreme temperature and UV rays

Body enhanced impact resistance

6-pin cylinder for high number differs



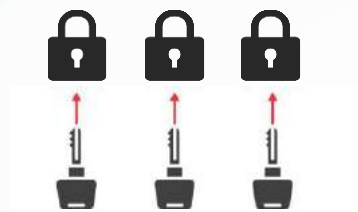
Stainless steel shackle for rust protection

Available in 5 different colors easy to identify by employee

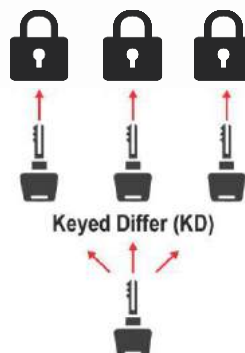
Contain "Danger" and "Property of" standard labels on front and back

Key retaining feature ensure the padlocks are not left unlocked

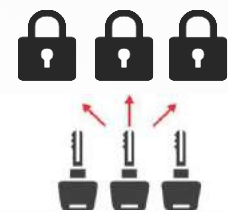
## KEY SYSTEM OPTIONS



**Key Different**  
Each padlock has its individual key and the key for one lock can not open another lock in any case



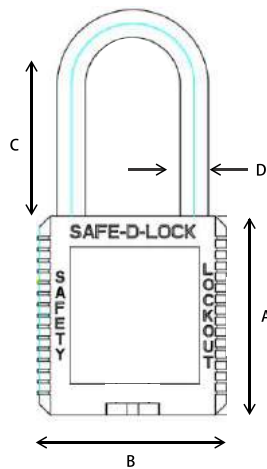
**Master Key**  
Master Key can be used to open multiple padlocks that are keyed differently



**Key Alike**  
All padlocks in a set can be opened with the same key

## LOCKOUT SAFETY PADLOCK

Lockout Safety Padlock are standardized by size, shape and available in different range of colors easier for workers to aware when device is isolated



V-PLK-D



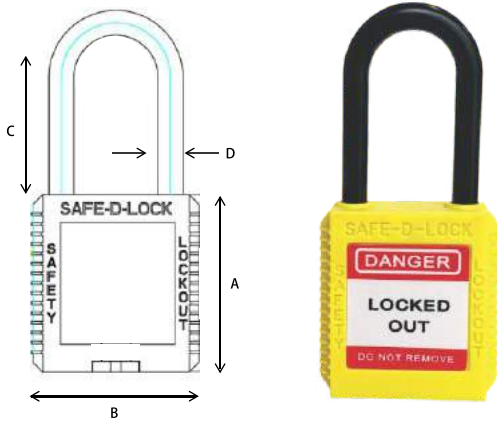
### Features

- Durable, lightweight with non-conductive Polyamide lock bodies
- Stainless Steel 304 shackle
- Resistance of chemical, extreme temperature and UV rays
- Temperature from -57°C +177°C
- Nonconductive lock body
- Enhanced impact resistance
- Key retaining feature ensure the padlocks are not left unlocked
- Contain "Danger" and "property of" standard labels on front and back
- Laser printing available.
- Available in 5 different colors: Red, Green, Orange, Blue & Yellow
- Complied with CE and RoHS standard

Part Number	Keying System	Length (A) mm	Body Width (B) mm	Shackle Height (C) mm	Shackle Diameter (D) mm	Packing
V-PLK-D	Keying Different	45	43	38	6	1
V-PLK-M	Keying Different + Master Key	45	43	38	6	5



## NON-CONDUCTIVE LOCKOUT PADLOCK



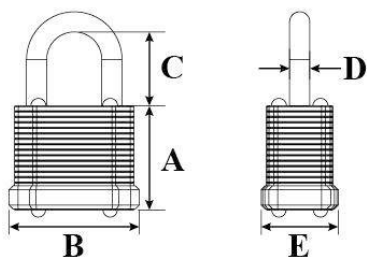
V-NPL-D

### Features

- Durable, light weight with non-conductive Polyamide lock bodies.
- Harden Nylon Shackle
- Non-sparking and corrosive resistant.
- Resistance of chemical extreme temperature and UV Rays.
- Temperature from -57°C -+177°C
- Non-conductive lock body
- Enhanced impact resistance
- Deal for electrical panel, medical, mining, food and beverage Lockout.
- Key retaining feature ensure the padlocks are not left unlocked.
- Contain "Danger" and "Property of" standard labels on front and back.
- Laser printing available.
- Available in 5 different colors : Red, Green, Orange, Blue & Yellow

Part Number	Keying System	Length (A) mm	Body Width (B) mm	Shackle Height (C) mm	Shackle Diameter (D) mm	Packing
V-NPL-D	Keying Different	45	43	38	6	1

## LAMINATED STEEL PADLOCK



V-PRS

### Features

- Maximum security laminated padlocks are made for tough lockout situation.
- Shackle is made of a special metal alloy for increased durability against cutting, prying and twisting.
- 5-pin tumbler cylinders for additional keying options.
- Padlocks are individually plated for improved corrosion resistance within the lock.

Part Number	Keying System	Length (A) mm	Body Width (B) mm	Shackle Height (C) mm	Shackle Diameter (D) mm	Depth (E) mm	Packing
V-PRS	Key Alike	33	43	47	6	25	3

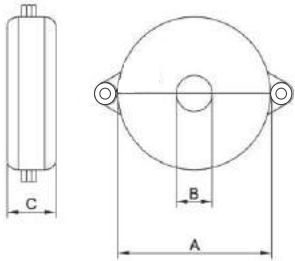
# VALVE LOCKOUT



**Valve Lockout** help to prevent potentially harmful accidents during maintenance or repairs. Valve lockout devices allow workers to close off or isolate energy sources such as gas, fluids , steam, pneumatic etc.

Valve lockout devices can be used for Ball Valve, Gate Valve and Butterfly Valve.

## GATE VALVE LOCKOUT



### Features

- This valve Lockout are combined from two parts, easy for storage and carry.
- Strong ABS plastics make them resistant to cracking and abrasion .
- Once locked, they rotate freely around the hand wheel & prevent the valve wheel from being turned.
- They are resistant to extreme weather and temperature conditions.
- Accommodates up to four Padlocks.
- Complied with CE and RoHS standard

Part Number	Hand Wheel Diameter mm	Outer Diameter (A) mm	Inner Diameter (B) mm	Body Height (C) mm	Packing
V-VG-02	25 - 63.5 (1" - 2")	77	19	37	1
V-VG-04	63.5 - 127 (2" - 5")	155	45	50	1
V-VG-06	127 - 165 (5" - 6")	200	65	65	1
V-VG-08	165 - 254 (6" - 10")	293	90	75	1
V-VG-10	254 - 330 (10" - 13")	390	100	75	1
V-VG-12	330 - 450 (13" - 18")	480	125	78	1
V-VG50-S	From 25 - 330 (1" - 13")	( V-VG02 to V-VG10 )			5 SET



## ADJUSTABLE GATE VALVE LOCKOUT



V-GVA

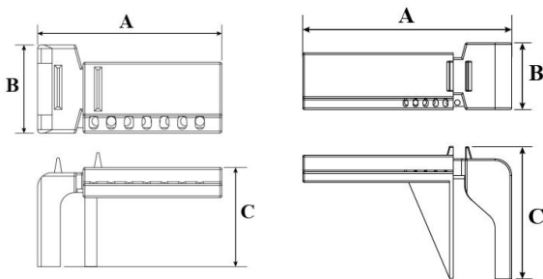
### Features

- Made from durable polypropylene.
- Adjusts to fit hand wheels from diameter 25.4mm to 165mm (1" to 6 1/2")
- Resistant to cracking and abrasion
- Can stand to extreme weather and temperature.

Part Number	Description
V-GVA	Wheel Diameter 25.4 - 165mm (1" - 6 1/2")



## BALL VALVE LOCKOUT



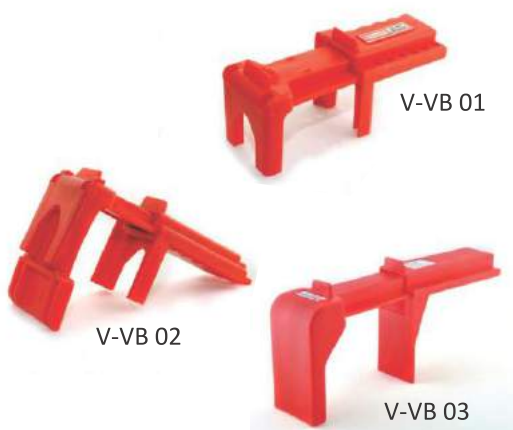
V-VB 01, V-VB 02

V-VB 03

### Features

- Made from polypropylene.
- Virtually indestructible valve covers.
- It prevents valve handle from being turned.
- Resistant to cracking and abrasion.
- Can stand to extreme weather and temperature.
- V-VB01 & VB02 ball valves can be locked in open or close position, V-VB03 can only be locked in close position.
- Available in different 3 sizes.

Part Number	Ball Valve Diameter	Length (A) mm	Width (B) mm	Height (C) mm
V-VB 01	3/8" - 1"	147	78	85
V-VB 02	1" - 2"	210	78	130
V-VB 03	2" - 8"	300	100	205



V-VB 01

V-VB 02

V-VB 03



## ADJUSTABLE FLANGE BALL VALVE LOCKOUT



V-FVA

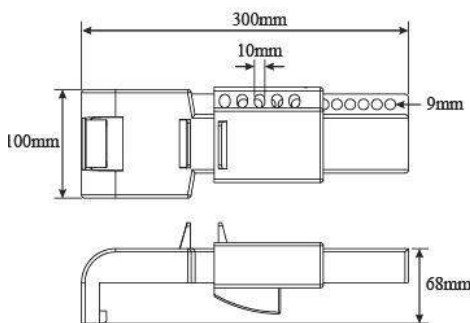
### Features

- Made from polypropylene.
- Adjustable to fit 6.35mm to 140mm (1/4" to 5") flange ball valve after removed the handle.
- Resistant to cracking and abrasion
- Can stand to extreme weather and temperature.

Part Number	Description
V-FVA	Diameter 6.35 - 140mm (1/4" - 5")



## BUTTERFLY VALVE LOCKOUT



### Features

- Suitable for most of the standard butterfly valves.
- Made from strong polypropylene plastics.
- Resistant to cracking and abrasion
- Can stand to extreme weather and temperature.
- They are resistant to extreme weather and temperature conditions.

Part Number	Description
V-VBF	For most of the standard butterfly valves



V-VBF



## UNIVERSAL BUTTERFLY VALVE LOCKOUT



V-VBF-UL

### Features

- Made from PVC & stainless steel components.
- Clamp attach to butterfly valve lever, preventing trigger handle from being squeezed.
- Suitable for various size of butterfly valves

Part Number	Description
V-VBF-UL	Suitable for various size of butterfly valves



## UNIVERSAL VALVE LOCKOUT



V-UV03

### Features

- Made from nylon & stainless steel.
- The Universal Lockout device is a modular system which enables you to Lockout valves of different types and sizes.
- Come with coated cable, arms and open ended clamp.
- Suitable for gate valve, ball valve and butterfly valve.

Part Number	Description
V-UV03	With coated cable, level arms and open ended clamp



# CABLE LOCKOUT



**CABLE LOCKOUT** are flexible and easy to use.

Ideal to lock multiple objects and locked with padlocks just as efficient as chains.

## HANDY CABLE LOCKOUT



V-CL6



### Features

- Made from Nylon.
- Comes with 2.4 meter plastic coated cable.
- Cable diameter 3.5mm.
- Can be use in variety of applications.
- Accomodate one padlock.

Part Number	Description
V-CL6	Diameter 3.5mm x 2.4 meters plastic coated cable

## MULTIPURPOSE CABLE LOCKOUT



V-UML



### Features

- Ideal for multiple control panel and gate valve lockouts.
- Made from PVC.
- 2 meters galvanized steel cable with stand more than 100kg.
- Accomodate up to 4 padlocks.

Part Number	Description
V-UML	Diameter 4mm x 2 meters plastic coated cable

## ECONOMY CABLE LOCKOUT



V-EL2

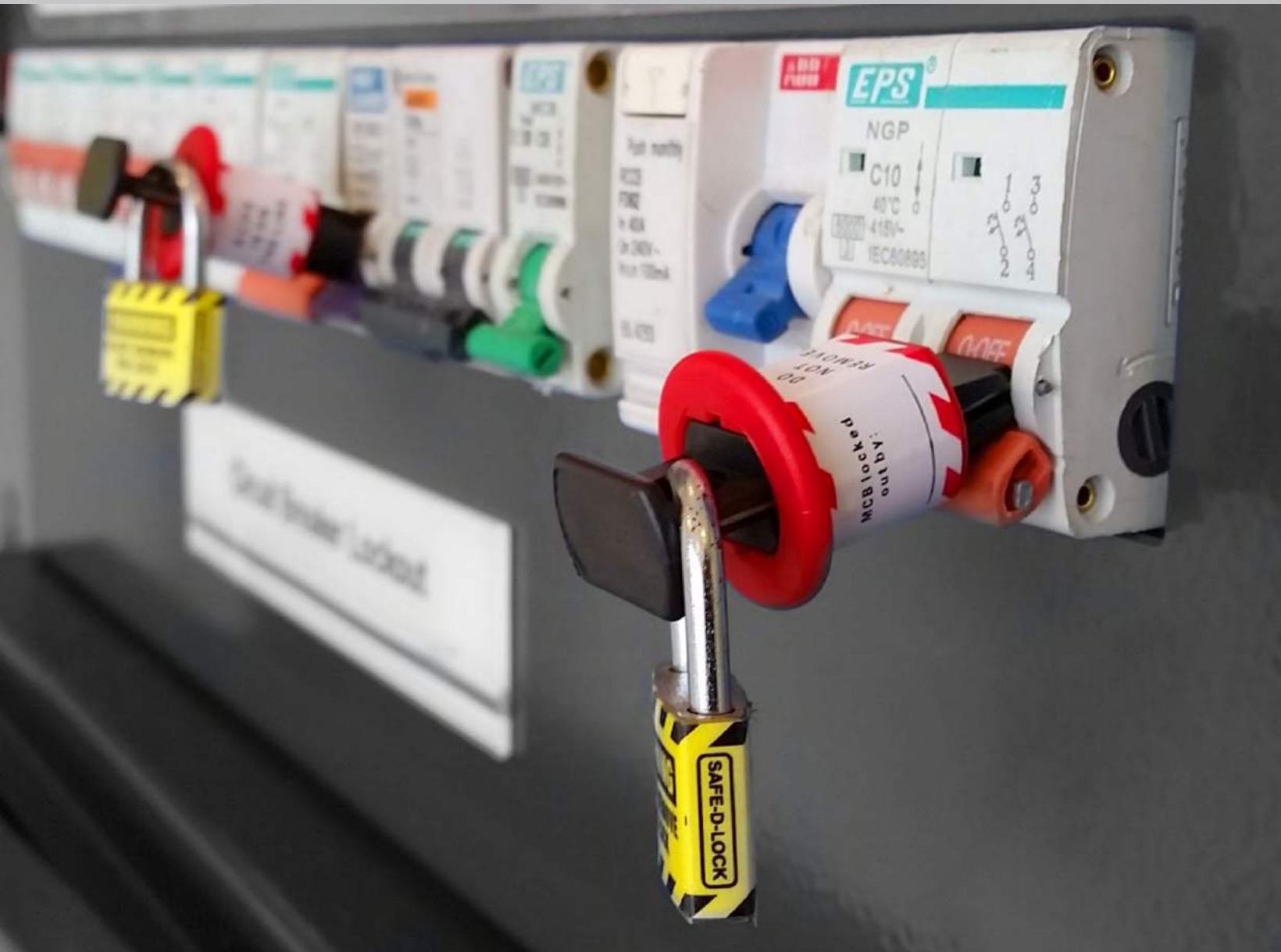
### Features

- Made from Nylon and brass.
- Comes with 2 meter stainless steel with anti UV PVC coated cable.
- Cable diameter 4mm.
- Can be used in variety of applications.
- Accomodate with several padlocks.
- Can used unique lockout tool or hexagonal spanner to install for the cable lockout devices

Part Number	Description
V-EL2	Diameter 4mm x 2 meter plastic coated cable

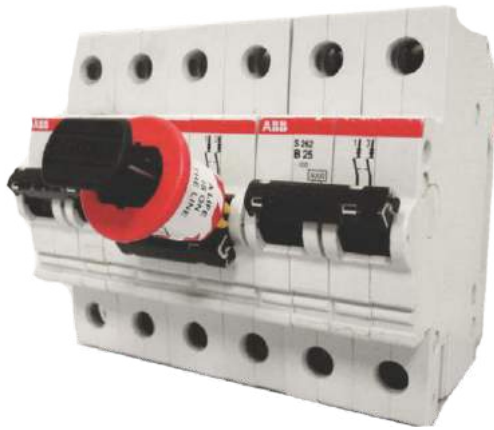


# ELECTRICAL LOCKOUT



**ELECTRICAL LOCKOUT** devices will help you properly shut down electrical control devices to prevent electrical accidents. Electrical control devices such as circuits breakers, switches, electric buttons, power cords etc.

## MINIATURE CIRCUIT BREAKER LOCKOUT



V-MCB-S

### Features

- Circuit breaker lockout device is considered as one of the primary lockout requirements.
- Safe & effective method for locking out all type of Miniature Circuit Breaker.
- Does not require any tool for installation.
- Can be applied to all single / multiple breakers.



V-MCB-PI



V-MCB-PO



V-MCB-PW

Part Number	Description	Packing
V-MCB-PI	Pin In	3
V-MCB-PO	Pin Out	3
V-MCB-PW	Pin Out Wide	3
V-MCB-S	Pin In / Pin Out / Pin In Wide	3

## MINIATURE CIRCUIT BREAKER LOCKOUT



V-MCB-E

### Features

- Made from thermoplastic material
- Safe & effective method for locking out most of Miniature Circuit Breaker.
- Thumb screw for easy installation.
- Padlock holes 6mm.

Part Number	Description
V-MCB-E	Miniature ISO / DIN circuit breaker

## UNIVERSAL MOLDED CASE CIRCUIT BREAKER LOCKOUT



V-ELCB-SA

V-ELCB-SN



### Features

- Safe & effective method for locking out Molded Case Circuit Breakers.
- With stainless steel adjustable thumb screw.
- It can be used on single & multi-pole breakers.
- Handle size from 7.5mm to 15mm tall and 4mm to 8.9mm thickness.
- Space for attaching a padlock to prevent access to the screw once installed.

Part Number	Description
V-ELCB-SN	Mold case circuit breaker lockout - Flat Type
V-ELCB-SA	Mold case circuit breaker lockout - Block Type

## LARGE CIRCUIT BREAKER LOCKOUT



V-LB12



### Features

- Lockout a wide range of large molded case circuit breakers.
- Easy installation with simply turn the rotary thumb screw.
- Allowing up to 10 individual padlocks to be attached to the device.

Part Number	Description
V-LB12	Large / oversize circuit breaker

## COMBO CIRCUIT BREAKER / FUSE LOCKOUT



V-CF4

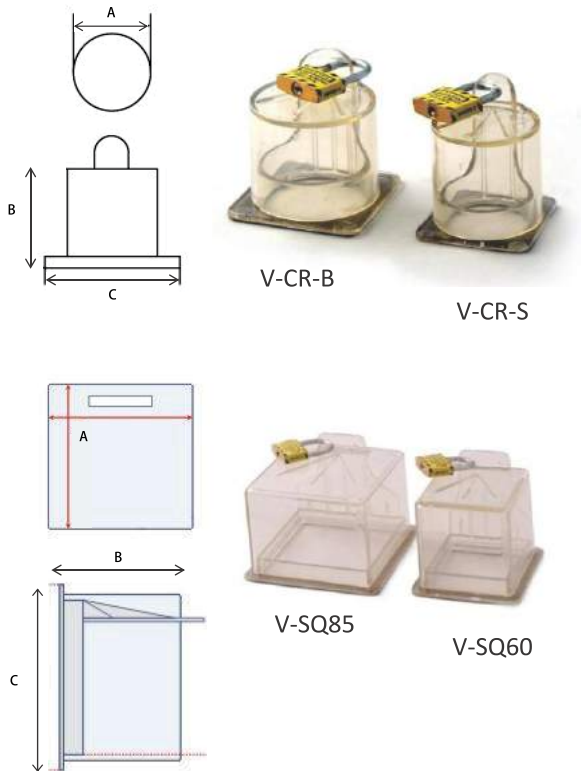


### Features

- This combo set come with four different type of lockout devices for the complete isolation of various types of circuit breakers.
- Clamp onto the circuit breaker toggle in the OFF position, using a small screwdriver fasten the set screw in the device.
- Place a padlock through the hole to prevent access to the set screw.

Part Number	Description	Packing
V-CF4	Yellow - Miniature Circuit Breaker Blue - Mold Case Circuit Breaker Red - Fuse Holder / Mold Case Circuit Breaker Red ( BIG ) - Large / Oversize Circuit Breaker	4

## ELECTRICAL PANEL & SWITCH LOCKOUT

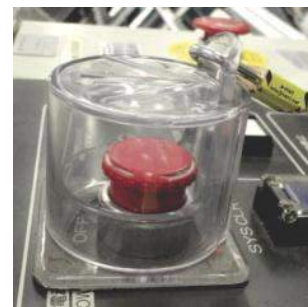


### Features

- Electrical switches lockout are designed to fix over most of the universal type of push buttons and switches. Each unit has been developed to completely enclose electrical buttons/ switches to prevent machine from being energized.
- Made from clear polycarbonate.

Part Number	Description	Diameter (A) mm	Height (B) mm	Base (C) mm
V-CR-S	Round	45	47	50 x 50
V-CR-B	Round	55	48	61 x 61

Part Number	Description	Diameter (A) mm	Height (B) mm	Base (C) mm
V-SQ60	Square	60 x 60	65	72 x 72
V-SQ85	Square	85x 85	65	95 x 95



## ELECTRICAL SWITCH & BUTTON LOCKOUT



### Features

- Against unauthorized operation or accidental activation.
- Made of transparent glass resin.
- Can be applied for emergency button, push button and on / off switch.
- Used for 22mm or 30mm diameter button.

Part Number	Width mm	Height mm	Depth mm
V-EB30	50	50	47

## EMERGENCY BUTTON LOCKOUT



V-MPB-C



### Features

- Safe & effective method for locking out emergency stop buttons of normal sizes.
- Made from polycarbonate.
- Transparent cover.
- Accommodates buttons up to 56mm diameter and 30mm tall.

Part Number	Description
V-MPB-C	Diameter 74mm x 46mm Height

## EMERGENCY BUTTON LOCKOUT



V-MPB



### Features

- Safe & effective method locking out emergency stop button of normal sizes.
- Made from polypropylene.
- Color : Red
- Provided with Lockout cable.

Part Number	Description
V-MPB	Diameter 77mm x 40mm Height

## PLUG / PNEUMATIC LOCKOUT



V-SPL-B

V-SPL-S



### Features

- Injection molded PVC.
- Suitable for all types of sockets and pneumatic couplers.
- For various of cable sizes.
- Use with any padlocks to keep equipment from being plugged in accidentally.
- Ensure that the plug cannot be used until the lock is remove.

Part Number	Diameter mm (Cable / Hose)	Width mm	Height mm	Length mm
V-SPL-S	13	50	52	80
V-SPL-B	8 - 19	92	96	165

## ELECTRICAL PLUG LOCKOUT



V-RP15



### Features

- Made from PVC.
- Accomodate one padlock.
- Prevent the plug insert into the socket.
- Suitable for all type of industrial round plugs.

Part Number	Description
V-RP15	16 - 125mm industrial plug

## MULTI ELECTRICAL PLUG LOCKOUT



V-CPL-E



### Features

- Yellow color injection molded electrical lockout.
- Use with any padlock to keep equipment from being plugged in accidentally.
- Enclose the plug so that it can't be used.
- Plug lockout accommodates high and low-voltage plugs up to 3" in diameter and 5" in length.
- 2 sliding top lids can be used individually or together to fit different sizes cords up to diameter 1 1/4".

Part Number	Description
V-CPL-E	For multi electrical plug

## HOIST CONTROLLER LOCKOUT



V-HPL



### Features

- Ideal for large electrical connector and hoist controller lockout.
- Adjustable belt for padlock.
- Flexible & durable fabric cover.
- Size 225mm width x 450mm length

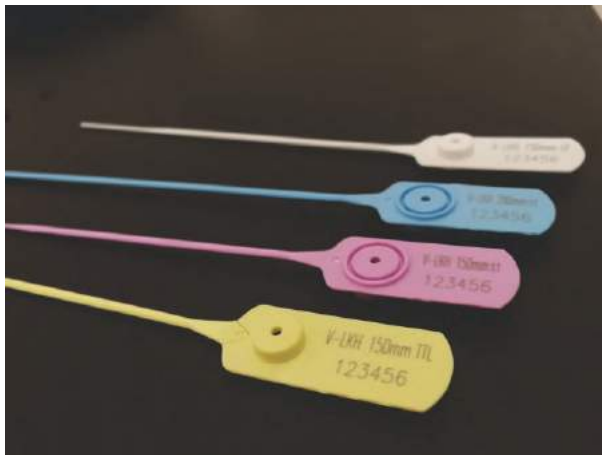
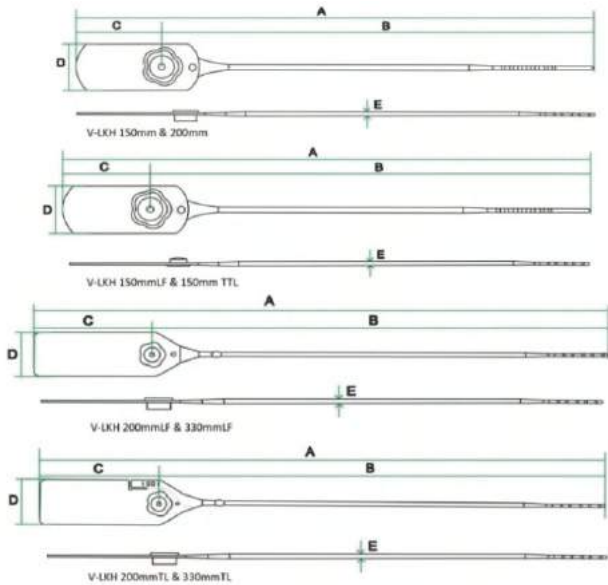
Part Number	Description
V-HPL	225mm width x 450mm length

# LOCKOUT SEAL



**LOCKOUT SEAL** are used to lock or seal a control valve to prevent unauthorized operation of the valve.

## PLASTIC LOCKOUT SEAL



### Features

This type of seals which is the locking mechanism come from stainless steel locking jaw and the seal of the welded cap is strong and weather resistant types.

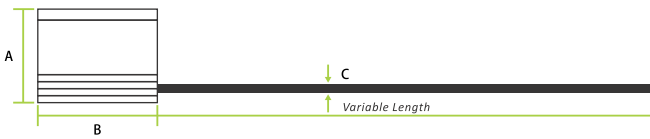
- This is a variable length seals with smooth round tails.
- Weather resistant.
- Each seal conforms to a variable loop design.
- Extra secure stainless steel metal jaw.
- Requires no tools for removal.
- Small strap diameter is suitable for applications with small sealing apertures.
- Smooth strap is more user friendly than conventional strap designs.
- Marking customize letter or outline logo.
- This plastic seal with sequential numbering.

Part Number	Model Dimension					Packing
	A mm	B mm	C mm	D mm	E mm	Quantity Box (Pieces)
V-LKH 150mm	180	150	30	18	2.2	1,000
V-LKH 150mmLF	184	150	34	18	2.2	1,000
V-LKH 150mmTTL	184	150	34	18	2.2	1,000
V-LKH 200mm	230	200	30	18	2.2	1,000
V-LKH 200mmLF	268	212	55	23	2.2	1,000
V-LKH 200mmTL	268	212	55	23	2.2	1,000
V-LKH 330mmLF	398	342	55	23	2.2	1,000
V-LKH 330mmTF	398	342	55	23	2.2	1,000





## METAL LOCKOUT



### Features

- High strength metal body, performed steel cable unravels.
- Tamper evident non-performed steel cable unravels when cut.
- Barrier protection - removable only with tools.
- Suitable for temperatures ranging from -40°C to 100°C.
- Unique locking mechanism secured into the locking body.
- The one way locking mechanism secured into the locking body.
- Suitable for securing valuables for long periods of time.
- Making customize letter or outline logo.
- This metal seal with sequential numbering.



Part Number	Model Dimension				Packing Quantity Box (Pieces)
	A mm	B mm	C mm	D mm	
V-MS2 1.5mm	22	32	1.5	6	300
V-MS2 2.0mm	22	32	2.0	8	250
V-MS2 2.5mm	22	32	2.5	8	250
V-MS2 3.5mm	22	32	3.2	9	200
V-MS2 5.0mm	22	45	5.0	13	50



# LOCKOUT TAGS

**TAGOUT** features the use of tags to inform employees of the impending or on going servicing on a particular piece of hazardous equipment. which can be securely fastened to an energy isolating device in accordance with an established procedure, to indicate that the energy isolating device and the equipment being controlled may not be operated until the tagout device is removed.

## TAG-OUT COMPLIANCE

1. Indicate that the energy isolating device and equipment being controlled cannot be operated until the Tag is removed.  
**29 FR 1910.147(b)**

2. Be constructed and printed so that exposure to water and moisture will not deteriorate the tag or make its message illegible.  
**29 CFR 1910.147(c)(5)(II)(A)(2)**

3. Identify the employee applying the device(s).  
**29 CFR 1910.147(c)(5)(II)(D)**

4. Where tag out device are used with energy isolating devices designed with the capability of being locked, the tag attachment shall be fastened at the same point at which the lock would have been attached.  
**29 CFR 1910.147(d)(4)(III)**

5. Warn against hazardous conditions if the machine or equipment is energized and shall included the appropriate legend, such as, Do Not Start, Do Not Energize...  
**29 CFR 1910.147(c)(5)(III)**



**V-T01**

0.7mm PVC Sheet  
Size : 143 x 80 mm ( h x w )



**V-T02**

0.7mm PVC Sheet (Self-laminating)  
Size : 143 x 80 mm ( h x w )



**V-T05**

0.3mm PVC Sheet  
Size : 145 x 75 mm ( h x w )



**V-T06**

0.3mm PVC Sheet  
Size : 145 x 75 mm ( h x w )

### Features

- Supplied with golden ring for extra strength for holding padlocks.
- Tags meets OSHA standards.
- Made from PVC.
- Can be re-useable.

# LOCKOUT STATIONS AND KITS



**LOCKOUT STATIONS** are equipped with devices that are needed to isolate mechanical electrical control points. Available in different design and sizes to fulfil of the various needs.

## LOCKOUT / TAGOUT STEEL STATION



V-LSS16



V-LSS30

### Features

- Steel with yellow powder coated.
- Wall Mounted. (V-LSS16)
- Adjustable Shelves x2pcs.
- Clear Fascia.
- Supplied with 5pcs chrome finish steel hangers.
- Lockable to prevent loss of valuable lockout items.
- Perforated back panel for hanging the padlocks, hasp & tags.
- Remarks : Excluded LOTO accessories.

Part Number	Shelf	Door	Width mm	Depth mm	Height mm
V-LSS16	2	1	355	152	406
V-LSS30	2	2	760	430	900

## POLYCARBONATE LOCKOUT STATION



V-LS20



V-LS10

### Features

- Supplied with lockable hinged cover to prevent loss of valuable lockout equipment.
- Holds up to 10 padlocks(V-LS10) and 20 padlocks (V-LS20).
- With tags compartment.
- Complied with CE and RoHS standard

Part Number	Hanger	Width mm	Depth mm	Height mm
V-LS10	5	408	65	313
V-LS20	14	565	60	394

## LOCKOUT / TAGOUT PVC STATION



V-LSP-B

### Features

- PVC station are designed to keep lockout equipment in a central location making access to isolate equipment easy.
- Durable plastic material.
- Five hangers for padlocks or hasps.
- Wall Mounted.

Part Number	Width mm	Height mm
V-LSP-B	152	203

## MINI PADLOCK STATION

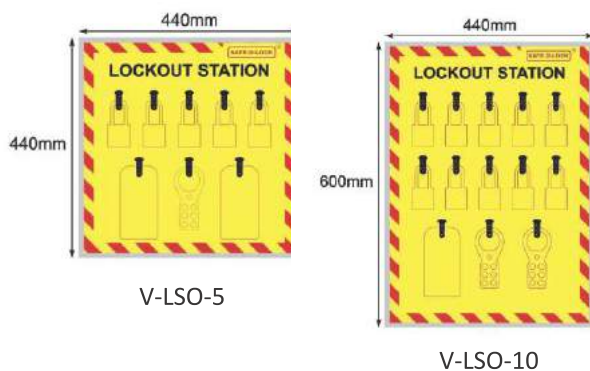


### Features

- Wall Mounted.
- Ideal for keeping padlocks nearby the working area.
- Heavy gauge steel with metallic powder coated.
- Available for 6, 12 and 18 padlocks.
- Padlocks not included.

Part Number	Padlocks	Width mm	Depth mm	Height mm
V-PS6	6	130	30	70
V-PS12	12	250	30	70
V-PS18	18	370	30	70

## LOCKOUT BOARD STATION



### Features

- Made from PVC board with aluminum frame
- Light weight
- Long plastic hooks for hanging padlocks, hasps and tags.
- With item shadows easier for inventory and storage.
- Wall Mounted.
- Can be customized design.

Part Number	Width mm	Height mm
V-LSO-5	440	440
V-LSO-10	440	600

## METAL GROUP LOCKOUT BOX

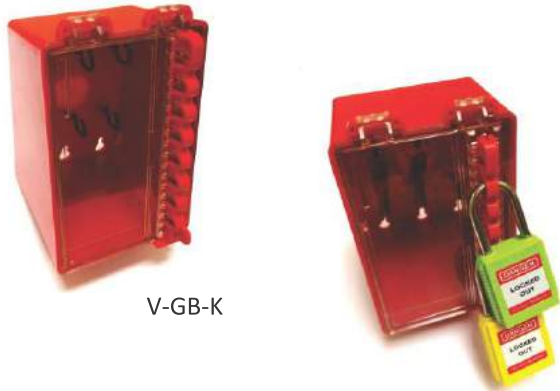


### Features

- For group lockout situation involving a large number of workers and equipment's, lockout box can simplify to lockout and ensure maximum security for complex working team.
- Made of special grade metallic sheet.
  - Red powder coated.
  - Accommodates up to 13 padlocks.
  - Easy handling and carrying.

Part Number	Width mm	Depth mm	Height mm
V-GB13	155	105	154

## MINI KEY GROUP LOCKOUT STATION



V-GB-K

### Features

- Plastic Injection molded with transparent window
- Wall mounted
- Hold up to 8 padlocks
- 6 hooks for hanging keys
- Keys can be slot in when locked
- Dimensions : 6" height x 4" width x 4 ½" Depth
- Complied with CE and RoHS standard

Part Number	Description
V-GB-K	6" height x 4" width x 4 ½" Depth

## KEY CABINET



V-KSS72

### Features

- Solid steel constructions
- Epoxy coated for durability ( Color : Light Grey )
- Good quality cam lock, inclusive of 2 keys
- Magnetic catch for added grip
- Galvanized and color coded metal key tags for easy organization
- Wall mounted or stand alone ( wall fixing plugs & screw included)

Part Number	Storage	Height mm	Width mm	Depth mm
V-KSS32	32	380	262	50
V-KSS72	72	455	380	50
V-KSS120	120	738	380	50

## SDS Station



V-SDS24

### Features

- Multiple SDS stations throughout plant or office.
- Keeps safety data sheets visible, organized, and accessible to all employees.
- The Station comes with a plastic pocket designed to hold binder.
- Wall Mounted.
- Visible Sign.
- Dimension : 325mm Width x 457mm Height x 75mm Depth

Part Number	Width mm	Depth mm	Height mm
V-SDS24	325	75	457

## PERSONAL LOCKOUT STATION



V-LS10-K

### Features

- Supplied with lockable hinged cover to prevent loss of valuable lockout equipment.
- With tags compartment station
- Dimension : 408mm Width x 65mm Depth x 313mm Height

- \* Safety Padlocks V-PLK-D - 3 nos.
- \* Vinly HASP VH-25 - 1 no.
- \* Vinly HASP VH-29 - 1 no.
- \* Tags V-T02 - 10 nos.
- \* Lockout Station V-LS101 - 1 no.

## PERSONAL STARTER LOCKOUT POUCH



V-P1-S

### Features

- . Lockout HASP - VH-25 - 1 no.
- . Lockout HASP - VH-39 - 1 no.
- . Safety Lockout Padlock - V-PLK-D - 2 nos.
- . Safety Lockout Tags - 2 nos.
- . Lockout Pouch - 1 no.

## PERSONAL ELECTRICAL LOCKOUT POUCH



V-P2-R

### Features

- .Lockout Hasp - VH-25 - 1 no.
- .Lockout Hasp - VH-39 - 1 no.
- .Circuit Breaker Lockout -V-MCB-S - 1 set
- .Universal Circuit Breaker Lockout -V-ELCB-SN - 1 no.
- .Combo Circuit Breaker & Fuse Lockout -V-CB4 - 1 set
- .Mushroom Push Button Lockout -V-MPB-C - 1pc
- .Safety Lockout Padlock -V-PLK-D - 1 no.
- .Safety Lockout Tags - 2 nos.
- .Lockout Pouch - 1 no

## VALVE LOCKOUT KIT



V-VLK

### Features

- .Gate Valve Lockout V-VG-02 - 1 no.
- .Gate Valve Lockout V-VG-04 - 1 no.
- .Gate Valve Lockout V-VG-06 - 1 no.
- .Ball Valve Lockout V-VB-01 - 1 no.
- .Ball Valve Lockout V-VB-02 - 1 no.
- .Universal Butterfly Valve Lockout - V-VBF - 1 no.
- .Vinyl Coated Hasp - VH-25 - 1 no.
- .Vinyl Coated Hasp - VH-39 - 1 no.
- .Safety Padlock - V-PRS - 3 nos.
- .Multiple Cable Lockout V-UML - 1 no.
- .Lockout Tags - 10 nos.
- .Lockout Bag - 1 no.

## ELECTRICAL LOCKOUT KIT



V-ELK

### Features

- .Combo Circuit Breaker/Fuse Lockout (4pcs) - V-CB4 - 1 set
- .Miniature Circuit Breaker Lockout - V-MCB-SET -1 set
- .Molded Case Circuit Breaker Lockout - V-ELCB-SN -1 no.
- .Molded Case Circuit Breaker Lockout - V-ELCB-SA -1no.
- .Large Circuit Breaker Lockout - V-LB12 - 1 no.
- .Plug/ Pneumatic Lockout - V-SPL-S - 1 no.
- .Plug/ Pneumatic Lockout - V-SPL-B - 1 no.
- .Electrical Plug Lockout Device - Yellow - V-CPL-E - 1 no.
- .De Electric Hasp 3 holes / 3 mm shackle - VH-N33 - 2 nos.
- .De Electric Hasp 3 holes / 6 mm shackle - VH-N36 - 2 nos.
- .Electrical Switches Lockout - V-CR-S - 1 no.
- .Electrical Switches Lockout - V-CR-B- 1 no.
- .Electrical Switches Lockout - V-SQ60- 1 no.
- .Electrical Switches Lockout - V-SQ85- 1 no.
- .Emergency stop Button Lockout -V-MPB -1 no.
- .Safety Padlocks , Key Different - V-PLK-D - 5 nos.
- .Lockout Tags - 10 nos.
- .Lockout Bag - 1 no.



## VALVE & ELECTRICAL COMBINATION LOCKOUT KIT



V-CLK

### Features

- .Adjustable Gate Valve Lockout - V-GVA -1pc
- .Ball Valve Lockout -V-VB-01 - 1pc
- .Ball Valve Lockout -V-VB-02 - 1pc
- .Multipurpose Cable Lockout -V-UML -1pc
- .Handy Cable Lockout -V-CL6 -1pc
- .PIN Type Circuit Breaker Lockout – V-MCB-SET -1 set
- .Universal Circuit Breaker Lockout -V-ELCB-SN -1pc
- .Universal Circuit Breaker Lockout -V-ELCB-SA -1pc
- .Large Circuit Breaker Lockout -V-LB12 -1pc
- .Combo Circuit Breaker -V-CBF-COMBO 4 -1 set
- .Pin and Sleeve Connector Lockout -V-RP15 -1pc
- .Emergency Button Lockout -V-MPB -1pc
- .Emergency Button Lockout -V-EB30 -1pc
- .Vinyl Coated Hasp -VH-39 -1pc
- .Vinyl Coated Hasp -VH-25 -1pc
- .Aluminum Labeling Hasp -VH-AL10 -1pc
- .Safety Lockout Tags -10pcs
- .Safety Lockout Padlock -V-PLK-D -3pcs
- .Lockout Bag -1pc

## LOCKOUT SIGNS



### Features

- Self adhesive vinly sticker
- Size : 150 x 200mm
- Packing : 5pcs / pack

## LOCKOUT FLOOR SIGNS



V-S1

V-S2

V-S3

### Features

- Made from polypropylene
- Lightweight and durable
- Quick set up and folds for easy storage
- Signs on both sides for better visibility
- Ideal for maintenance crews to cordoning off hazardous areas.

## LOCKOUT POSTER



V-FS01

V-FS02

V-FS03

Size : 610 x 455mm  
(h x w)

Size : 610 x 455mm  
(h x w)

Size : 610 x 455mm  
(h x w)

### Features

Lockout posters are a valuable asset to every company, especially when used in conjunction with training and lockout policies.

An information will help employees understand lockout, help to prevent injuries and save lives by communicating safe lockout/tagout procedures.

Lockout posters include specific instructions and illustrations to communicate the critical steps of an effective lockout procedure.